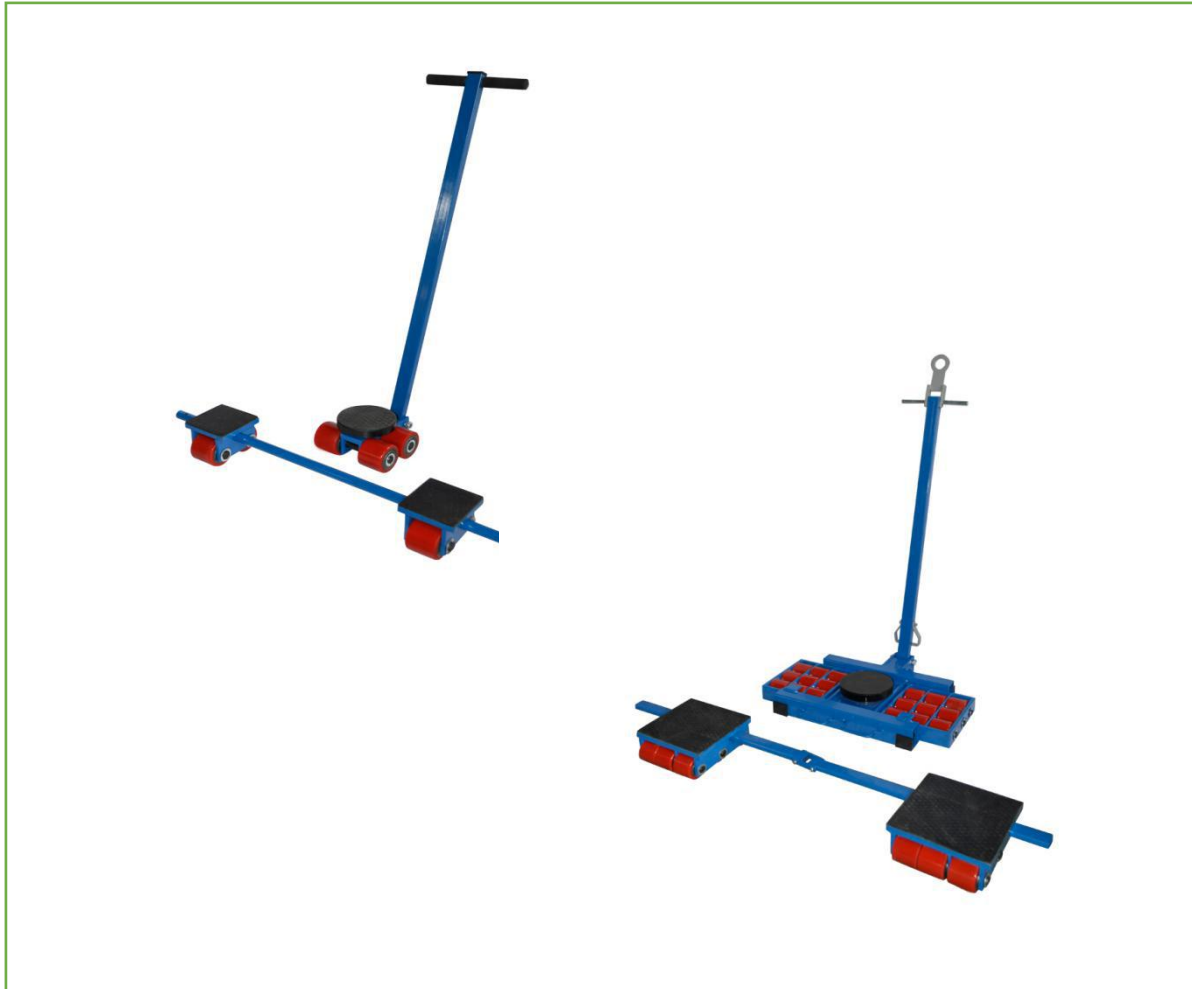


Machine Moving Equipment

Series X + Y

Operating instructions



⚠️ WARNING: Read carefully and understand all ASSEMBLY AND OPERATION INSTRUCTIONS before operating. Failure to follow the safety rules and other basic safety precautions may result in serious personal injury.

⚠CAUTION

- Always use the correct equipment to load the skate such as toe jacks.
- When loading the skate set make sure the load is distributed in such away that each individual skate is not overloaded.
- Make sure the load will not tip over from the skate.
- Make sure the load is not unstable on the skate and avoid any risk of the load tipping over or falling from the skate.
- When moving loads on a floor that has a slope make sure you have means of controlling the movement of the load once it starts moving.
- Always insure the floor is clean and free from any items that could damage the wheels of the skates.

Maintenance

- Inspect the skates on a regular basis and before use to insure they are in a safe to use condition.
- Keep the wheels clean and remove any metal items that have become in bedded in the wheels.
- Lubricate the wheels to allow the skates to continue to move freely making moving the load easier.

Personal protection

- Always wear safety boots when moving heavy loads.
- Do not put feet or hands under the load once it is placed on the skates.
- When moving the load on the skate always insure that there is no risk of any person becoming trapped by the moving load.

Maximum Capacity of skate sets

8 tonne = 1 x 4 tonne steering skate with turntable
 2 x 2 tonne steering skates

16 tonne = 1 x 8 tonne steering skate with turntable
 2 x 4 tonne trailing skates

24 tonne = 1 x 12 tonne steering skate with turntable
 2 x 6 tonne trailing skates

32 tonne = 1 x 16 tonne steering skate with turntable
 2 x 8 tonne trailing skates

36 tonne = 1 x 18 tonne steering skate with turntable
 2 x 9 tonne trailing skates

48 tonne = 1 x 24 tonne steering skate with turntable
 2 x 12 tonne trailing skates

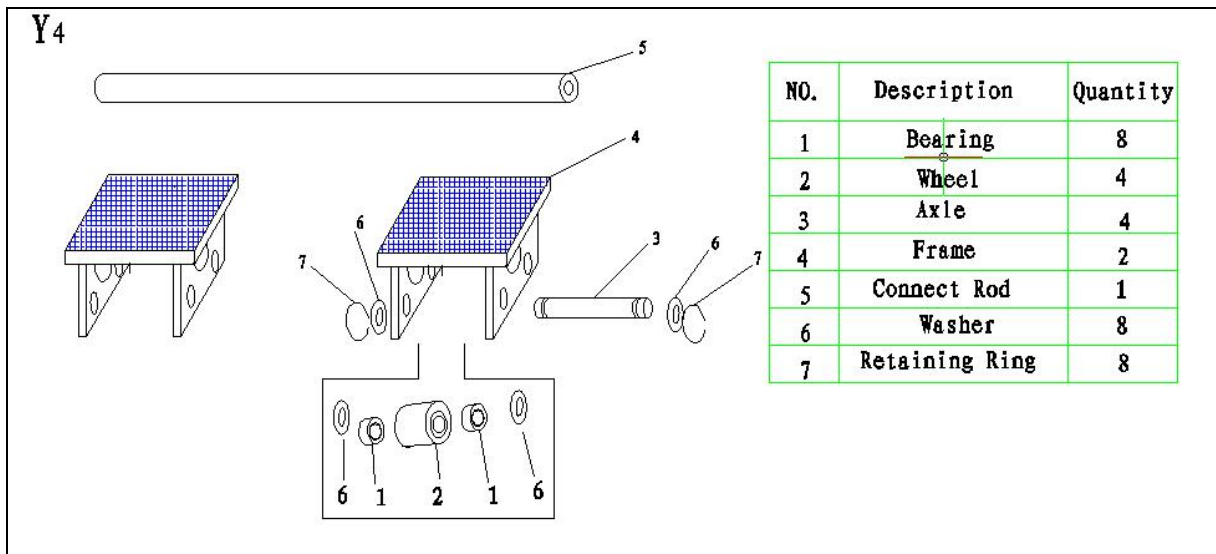
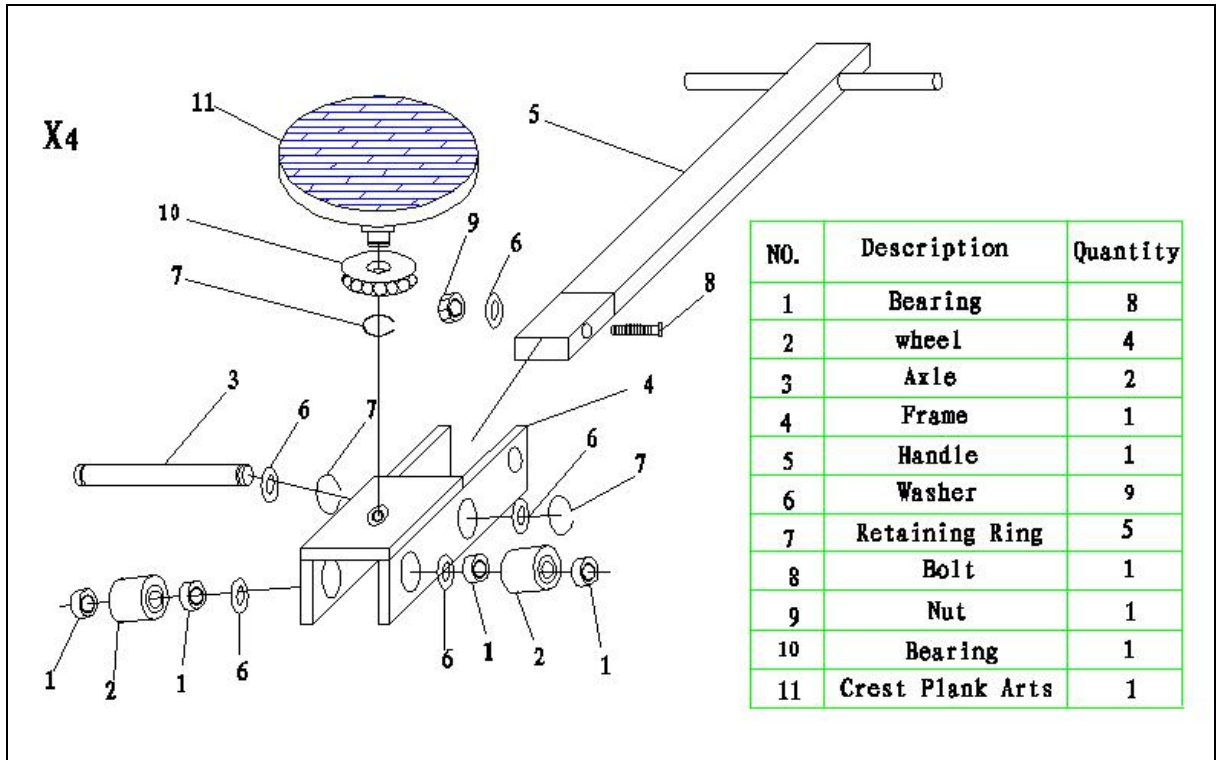
64 tonne = 1 x 32 tonne steering skate with turntable
 2 x 16 tonne trailing skates

Never exceed the maximum load of skate

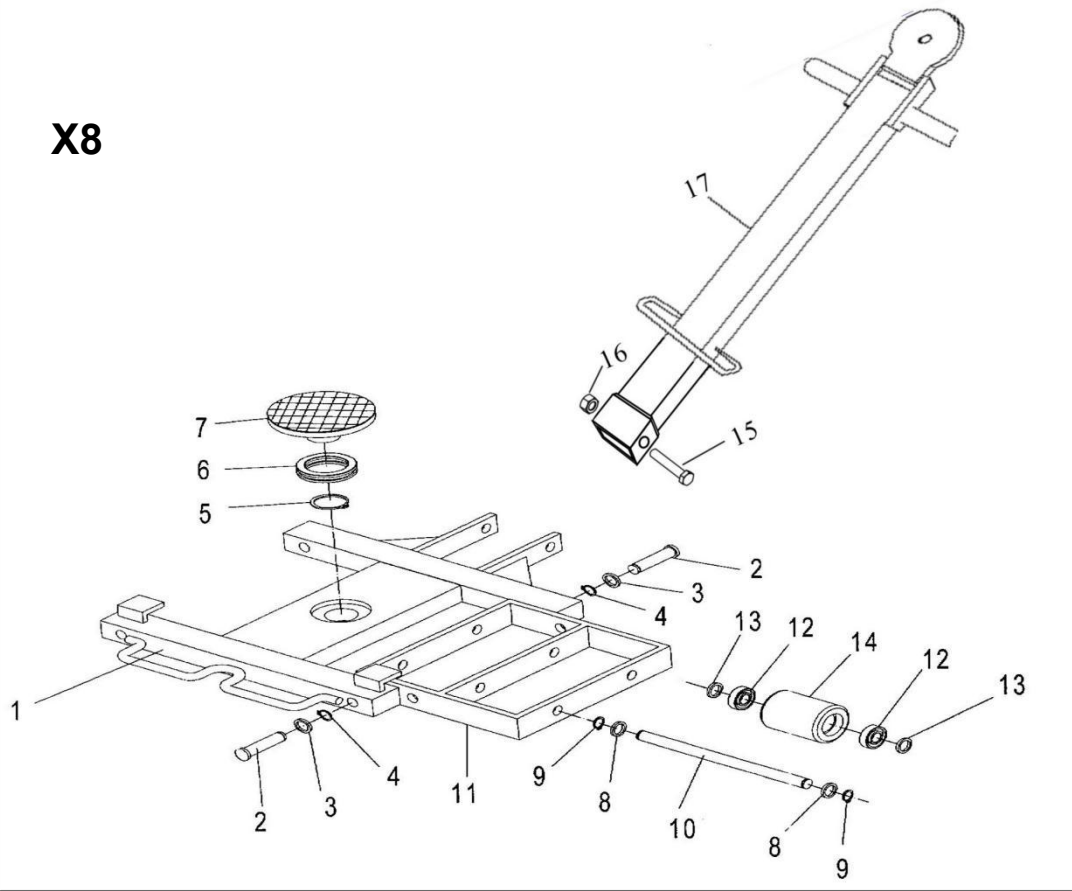
Technical Specifications

Model		Rollers Quantity	Dimensions of turn plate (in.)	Length of Handle Adjusting Length of Lever (in.)	Overall Dimensions L×W×H (in.)	Capacity (lb.)	Net Weight (lb.)
X4+Y4	X4	4	Φ5-29/32	39-61/64	9-1/16 × 9-1/16 × 4-21/64	17,600	59
	Y4	4	5-1/8 × 5-1/8	11-13/16 — 39-3/8	6-11/16 × 5-33/64 × 4-21/64		
X8+Y8	X8	8	Φ6-19/64	51-3/16	20-55/64 × 18-57/64 × 4-21/64	35,200	156
	Y8	8	7-7/8 × 6-19/64	15-3/4 — 51-3/16	15-3/4 × 7-7/8 × 4-21/64		
X12+Y12	X12	12	Φ7-3/32	51-3/16	29-9/64 × 21-17/64 × 4-21/64	52,900	223
	Y12	12	11-1/32 × 7-3/32	15-3/4 — 55-1/8	15-3/4 × 11-1/32 × 4-21/64		
X16+Y16	X16	16	Φ7-7/8	57-7/8	35-53/64 × 21-17/64 × 4-21/64	70,500	284
	Y16	16	9-29/64 × 7-3/32	15-3/4 — 59-1/16	15-3/4 × 14-11/64 × 4-21/64		
X18+Y18	X18	18	Φ7-7/8	57-7/8	29-59/64 × 25-13/64 × 4-21/64	79,300	320
	Y18	18	11-1/32 × 7-7/8	15-3/4 — 59-1/16	22-3/64 × 13 × 4-21/64		
X24+Y24	X24	12	Φ8-21/32	69-31/64	35-7/16 × 27-9/16 × 6-19/64	105,800	540
	Y24	12	12-63/64 × 7-7/8	23-5/8 — 78-47/64	18-57/64 × 14-9/16 × 6-19/64		
X32+Y32	X32	16	Φ9-27/32	69-31/64	44-3/32 × 27-9/16 × 6-19/64	141,000	697
	Y32	16	16-17/32 × 7-7/8	31-1/2 — 78-47/64	18-57/64 × 18-7/64 × 6-19/64		

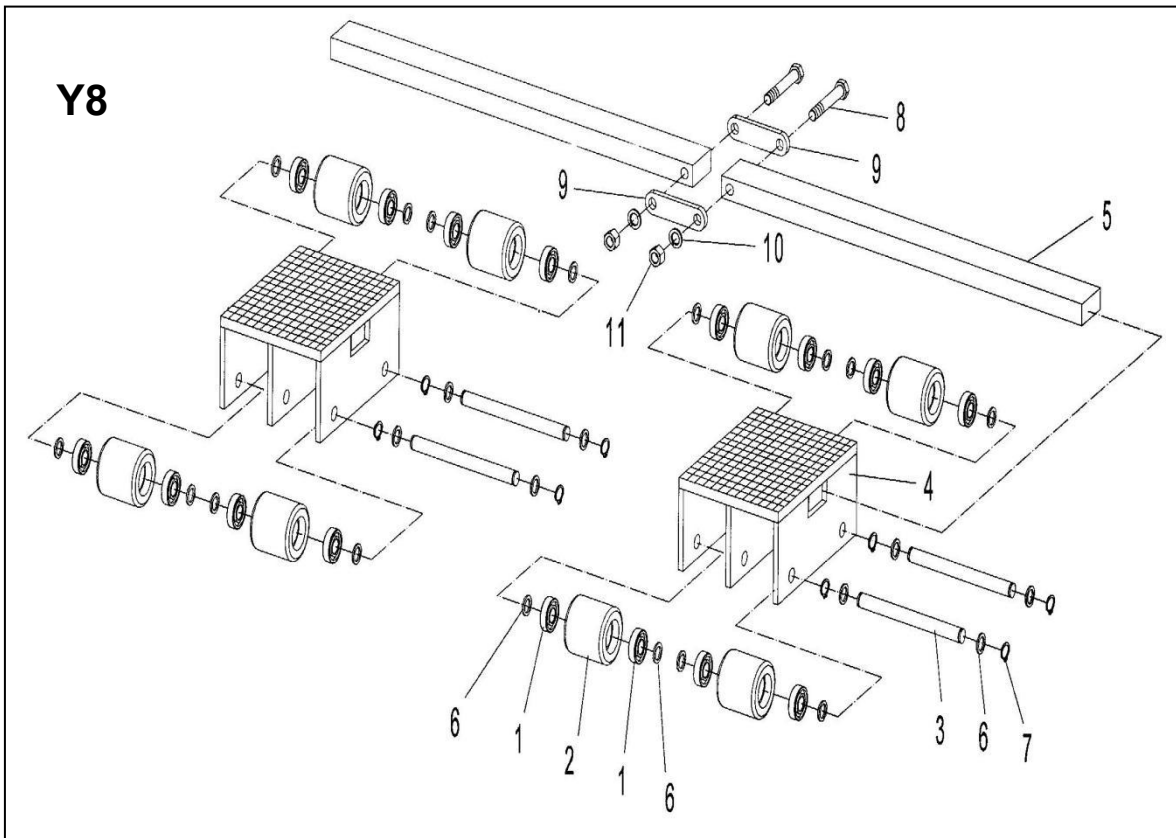
Parts Diagram



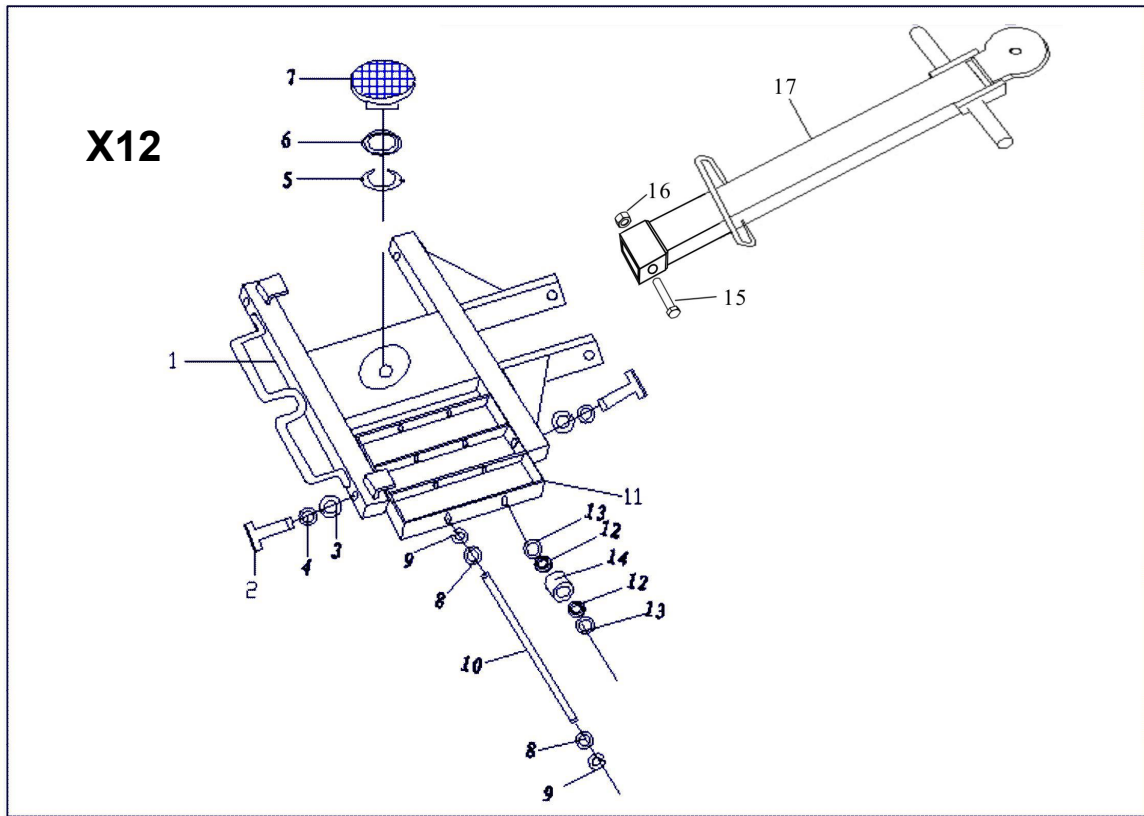
X8



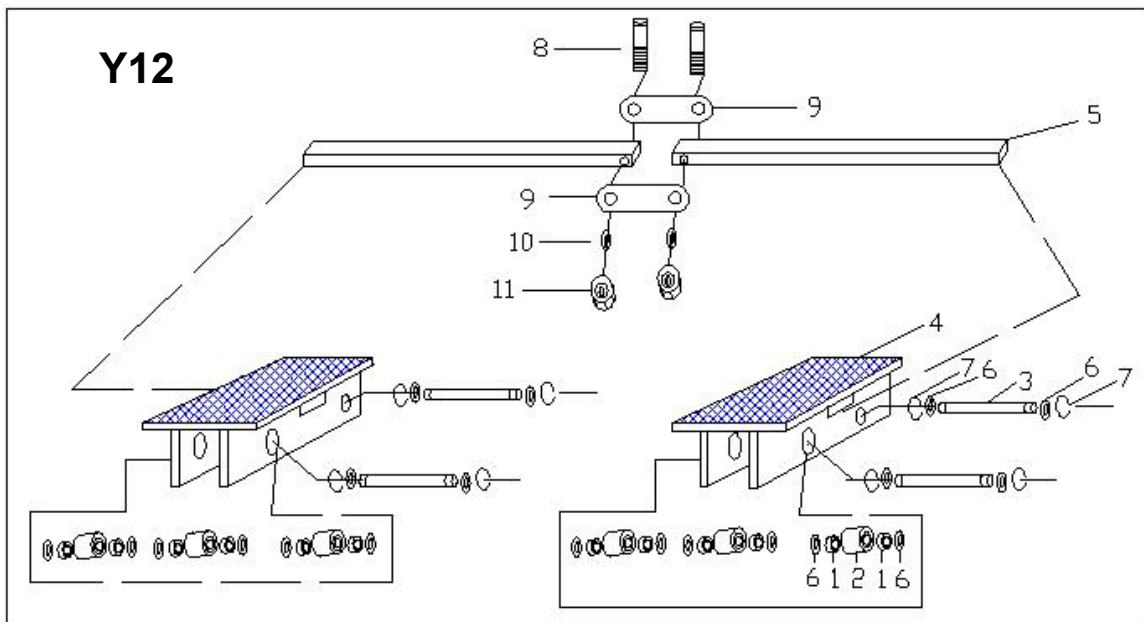
No.	Description	Quantity
1	Frame	1
2	Shaft	4
3	Washer	4
4	Retaining Ring	4
5	Retaining Ring	1
6	Bearing	1
7	Crest Plank Arts	1
8	Washer	8
9	Retaining Ring	8
10	Axle	4
11	Frame of Roller	2
12	Bearing	16
13	Washer	16
14	Wheel	8
15	Bolt	1
16	Nut	1
17	Handle	1



No.	Description	Quantity
1	Bearing	16
2	Wheel	8
3	Axle	4
4	Frame	2
5	Connect Rod	2
6	Washer	26
7	Retaining Ring	8
8	Bolt	2
9	Connect Plank	2
10	Elastic Washer	2
11	Nut	2

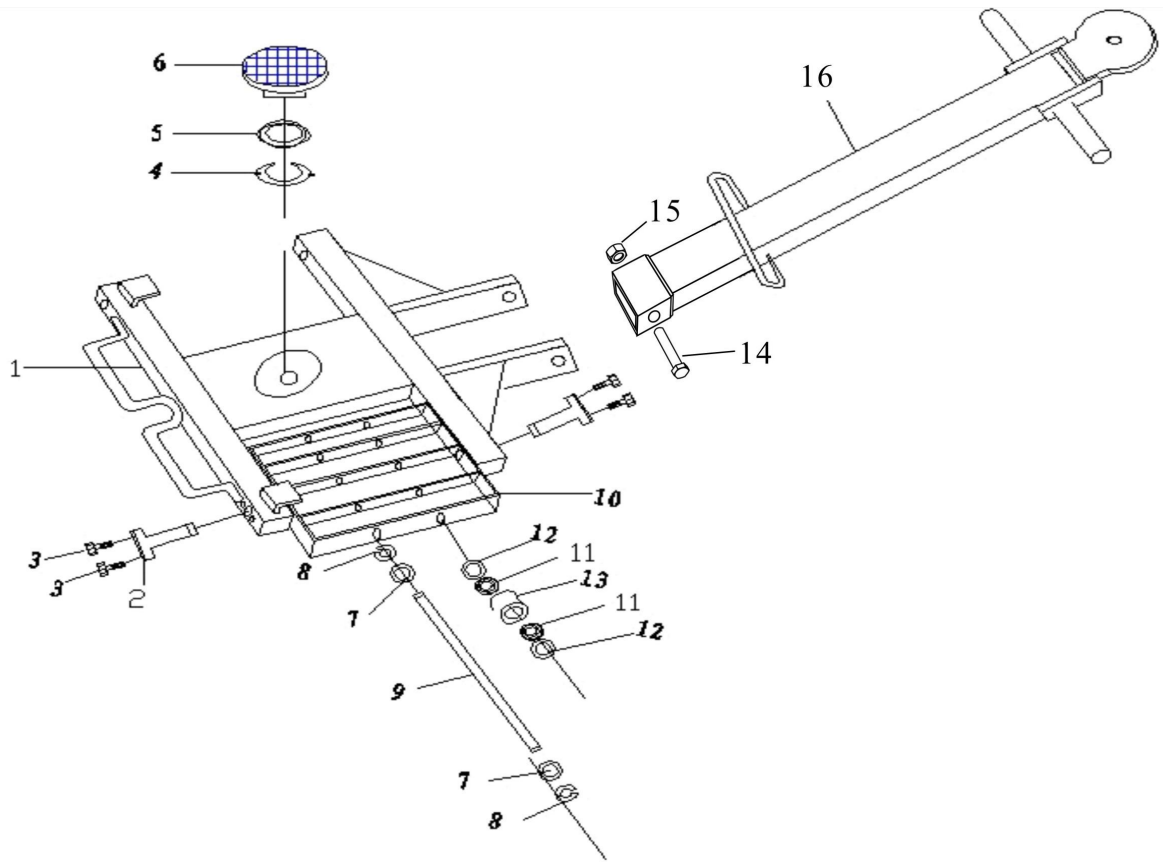


No.	Description	Quantity
1	Frame	1
2	Shaft	4
3	Washer	4
4	Retaining Ring	4
5	Retaining Ring	1
6	Bearing	1
7	Crest Plank Arts	1
8	Washer	8
9	Retaining Ring	8
10	Axle	4
11	Frame of Roller	2
12	Bearing	24
13	Washer	24
14	Wheel	12
15	Bolt	1
16	Nut	1
17	Handle	1

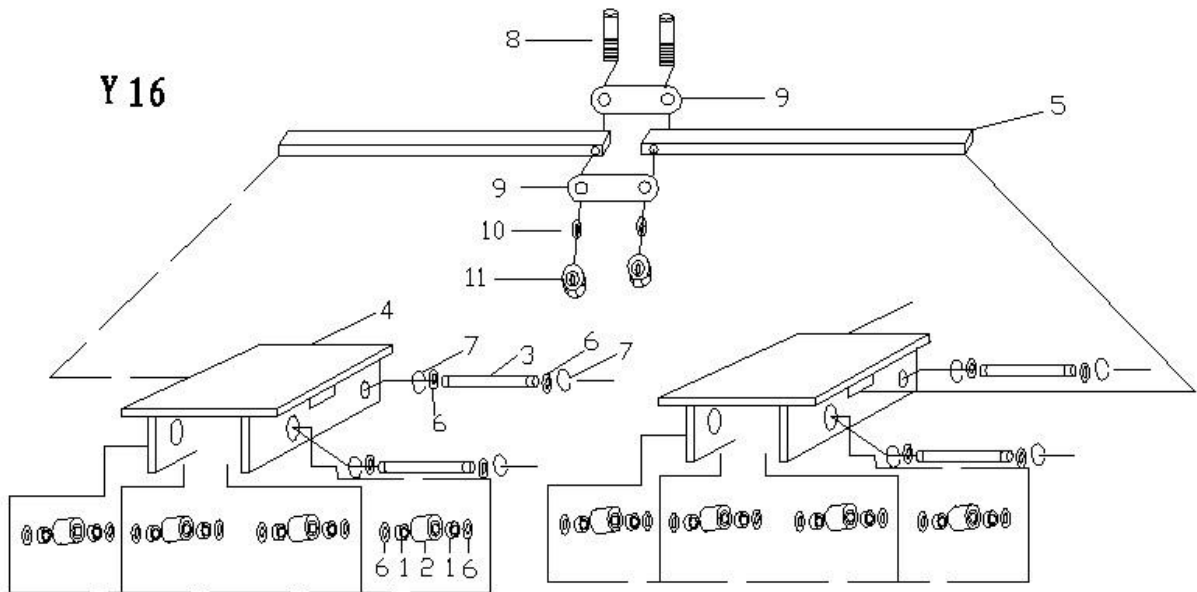


No.	Description	Quantity
1	Bearing	24
2	Wheel	12
3	Axle	4
4	Frame	2
5	Connect Rod	2
6	Washer	24
7	Retaining Ring	4
8	Bolt	2
9	Connect Plank	2
10	Elastic Washer	2
11	Nut	2

X16

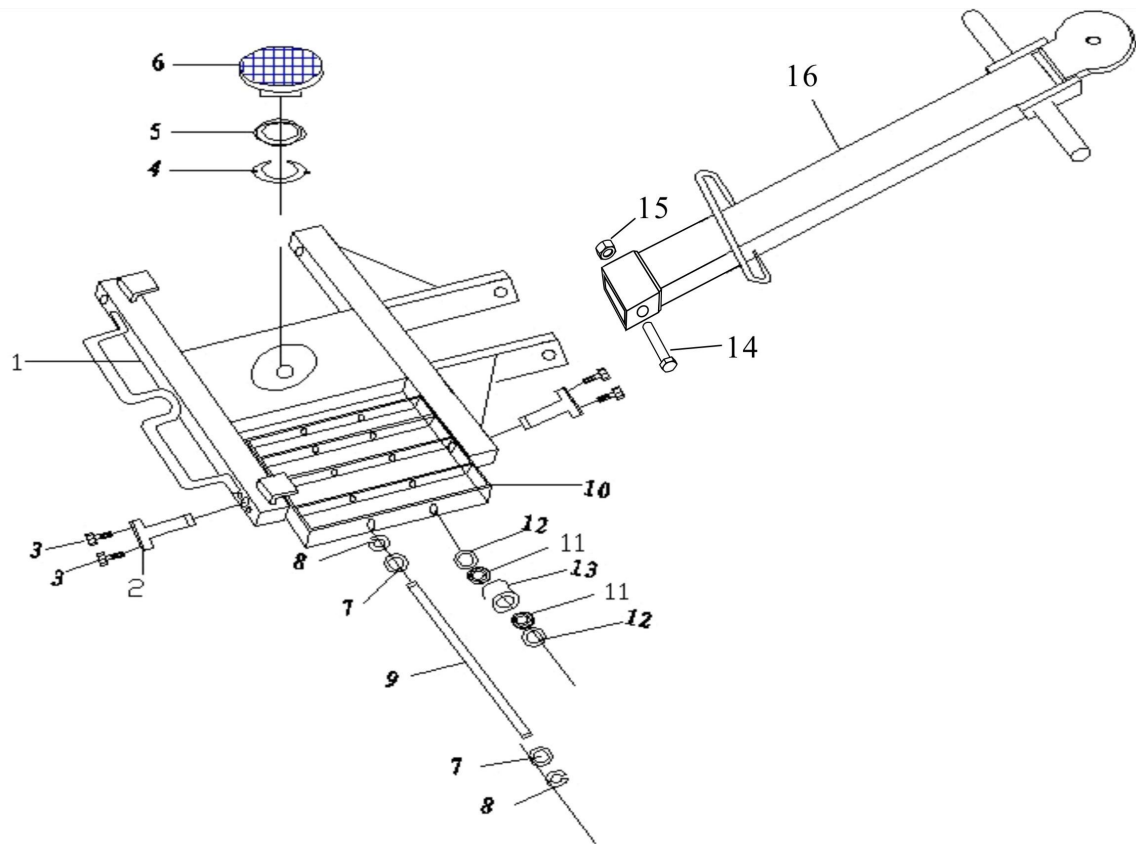


No.	Description	Quantity
1	Frame	1
2	Shaft	4
3	Bolt	4
4	Retaining Ring	1
5	Bearing	1
6	Crest Plank Arts	1
7	Washer	8
8	Retaining Ring	8
9	Axle	4
10	Frame of Roller	2
11	Bearing	32
12	Washer	32
13	Wheel	16
14	Bolt	1
15	Nut	1
16	Handle	1

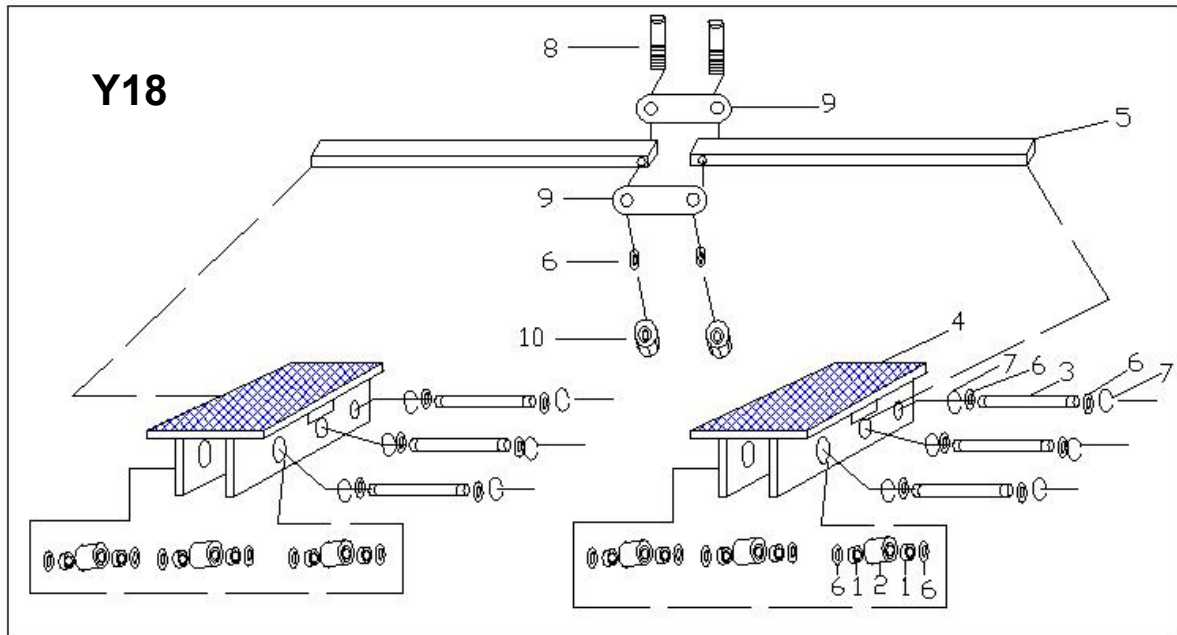


No.	Description	Quantity
1	Bearing	32
2	Wheel	16
3	Axle	4
4	Frame	2
5	Connect Rod	2
6	Washer	32
7	Retaining Ring	4
8	Bolt	2
9	Connect Plank	2
10	Elastic Washer	2
11	Nut	2

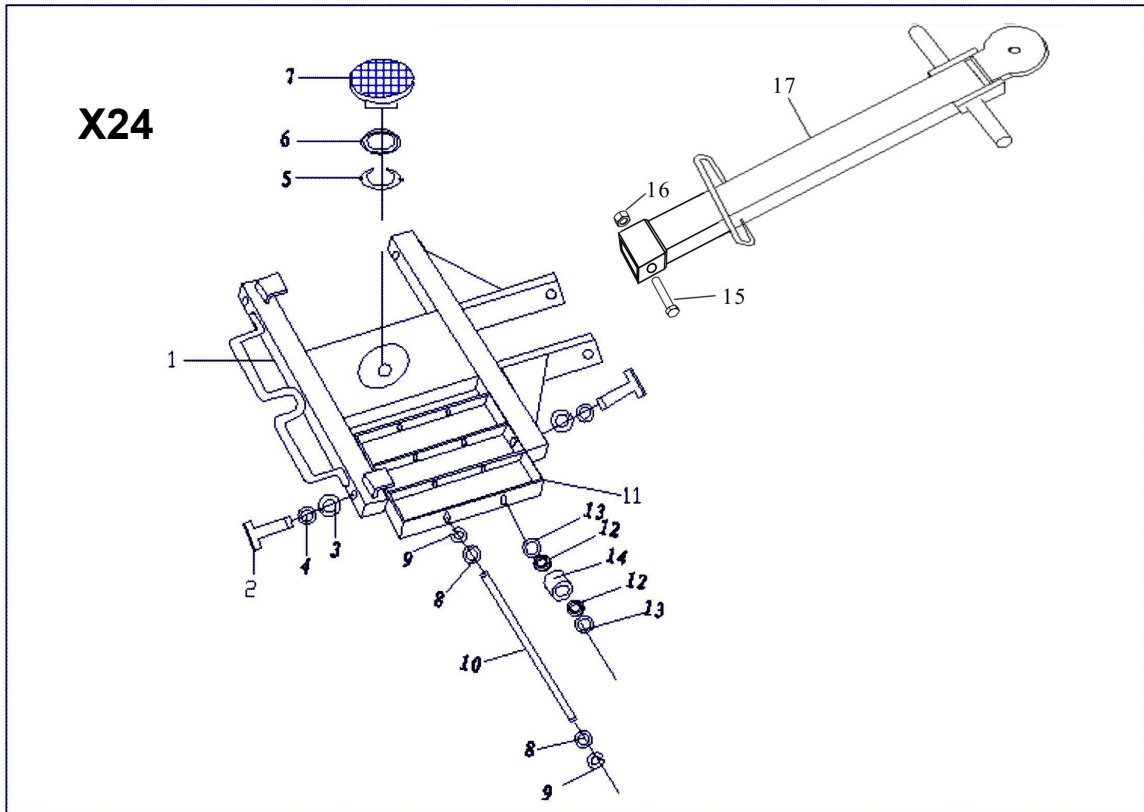
X18



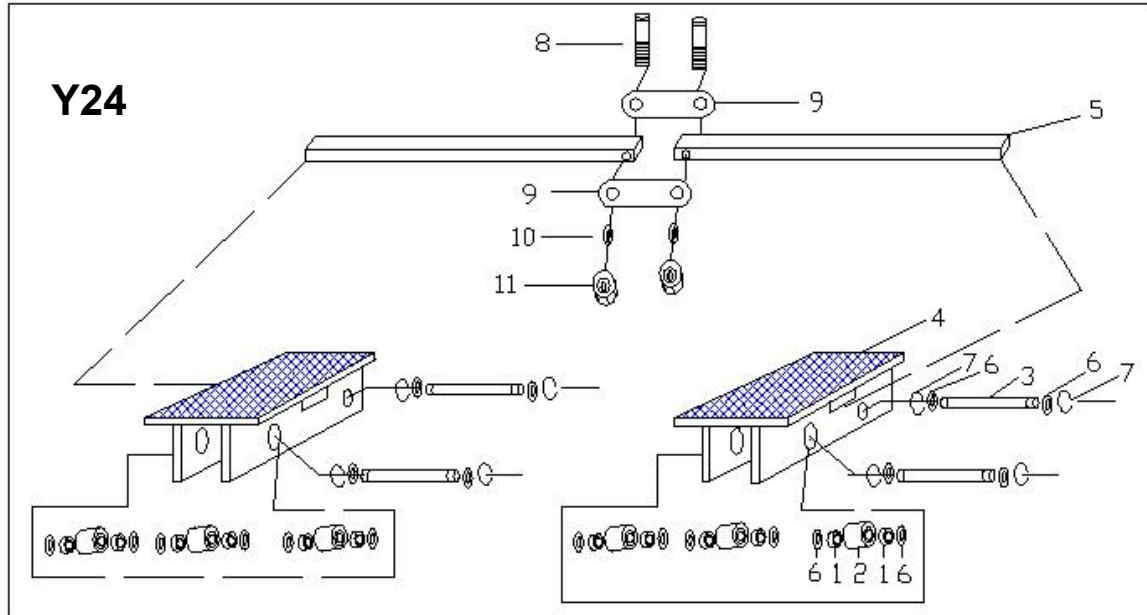
No.	Description	Quantity
1	Frame	1
2	Shaft	4
3	Bolt	4
4	Retaining Ring	1
5	Bearing	1
6	Crest Plank Arts	1
7	Washer	8
8	Retaining Ring	8
9	Axle	4
10	Frame of Roller	2
11	Bearing	36
12	Washer	36
13	Wheel	18
14	Bolt	1
15	Nut	1
16	Handle	1



No.	Description	Quantity
1	Bearing	36
2	Wheel	18
3	Axle	4
4	Frame	2
5	Connect Rod	2
6	Washer	36
7	Retaining Ring	4
8	Bolt	2
9	Connect Plank	2
10	Elastic Washer	2
11	Nut	2

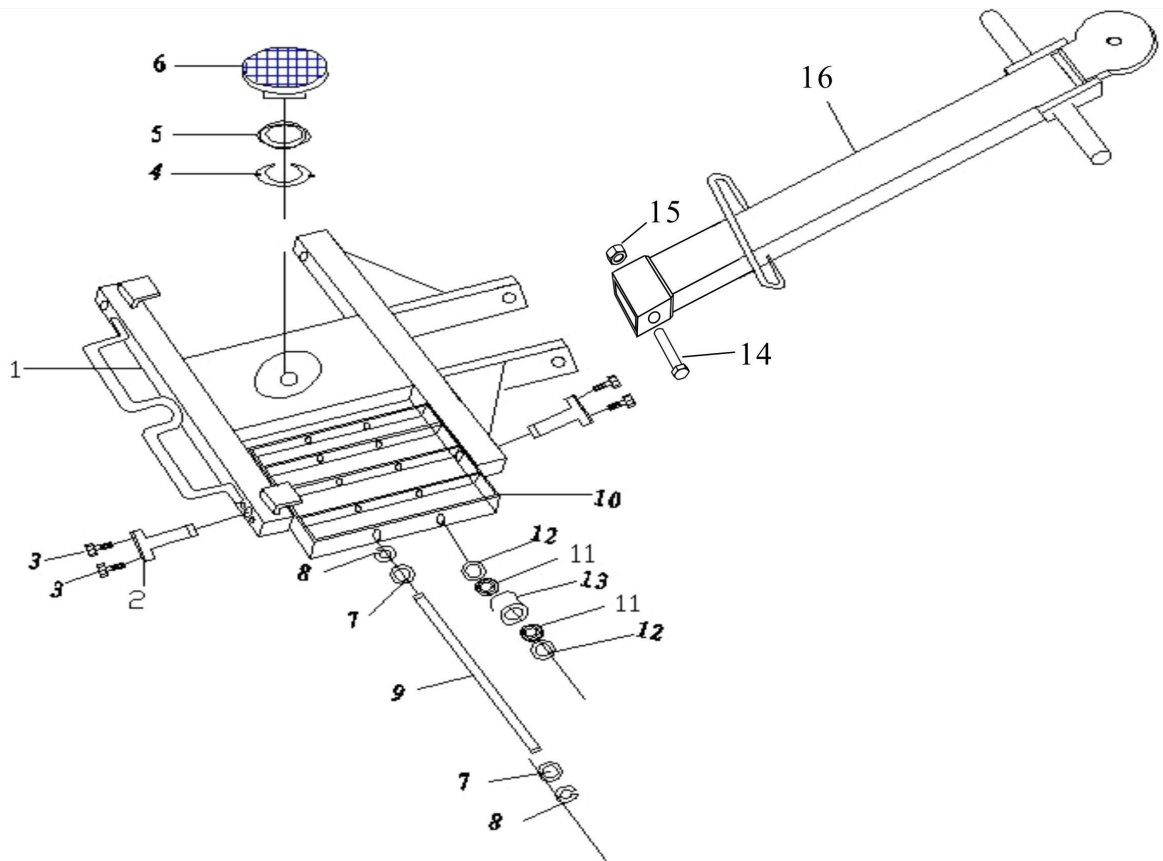


No.	Description	Quantity
1	Frame	1
2	Shaft	4
3	Washer	4
4	Retaining Ring	4
5	Retaining Ring	1
6	Bearing	1
7	Crest Plank Arts	1
8	Washer	8
9	Retaining Ring	8
10	Axle	4
11	Frame of Roller	2
12	Bearing	24
13	Washer	24
14	Wheel	12
15	Bolt	1
16	Nut	1
17	Handle	1



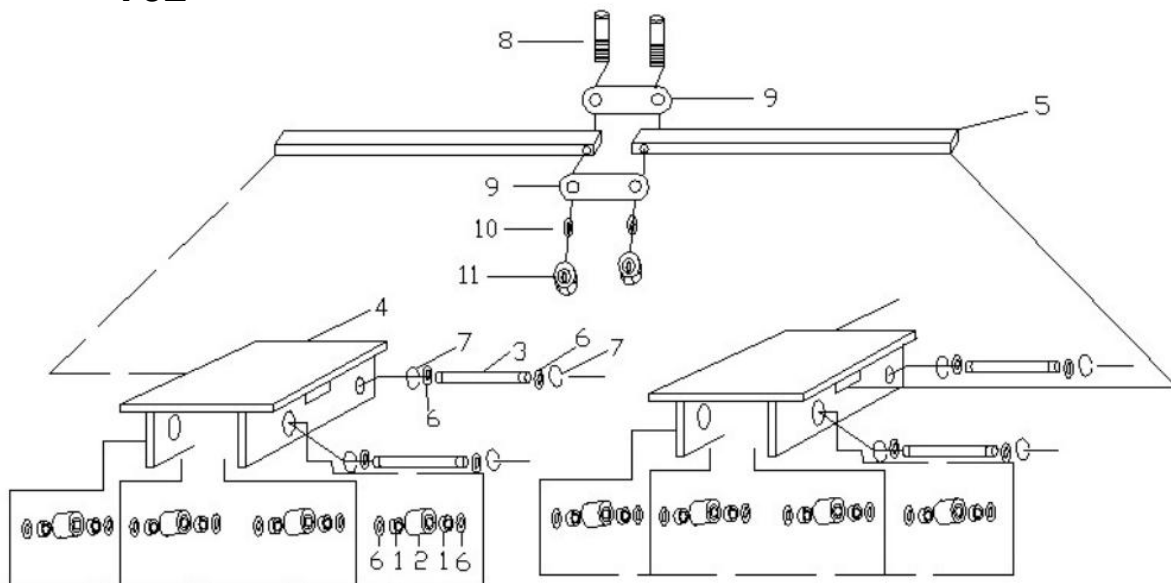
No.	Description	Quantity
1	Bearing	24
2	Wheel	12
3	Axle	4
4	Frame	2
5	Connect Rod	2
6	Washer	24
7	Retaining Ring	4
8	Bolt	2
9	Connect Plank	2
10	Elastic Washer	2
11	Nut	2

X32



No.	Description	Quantity
1	Frame	1
2	Shaft	4
3	Bolt	4
4	Retaining Ring	1
5	Bearing	1
6	Crest Plank Arts	1
7	Washer	8
8	Retaining Ring	8
9	Axle	4
10	Frame of Roller	2
11	Bearing	32
12	Washer	32
13	Wheel	16
14	Bolt	1
15	Nut	1
16	Handle	1

Y32



No.	Description	Quantity
1	Bearing	32
2	Wheel	16
3	Axle	4
4	Frame	2
5	Connect Rod	2
6	Washer	32
7	Retaining Ring	4
8	Bolt	2
9	Connect Plank	2
10	Elastic Washer	2
11	Nut	2